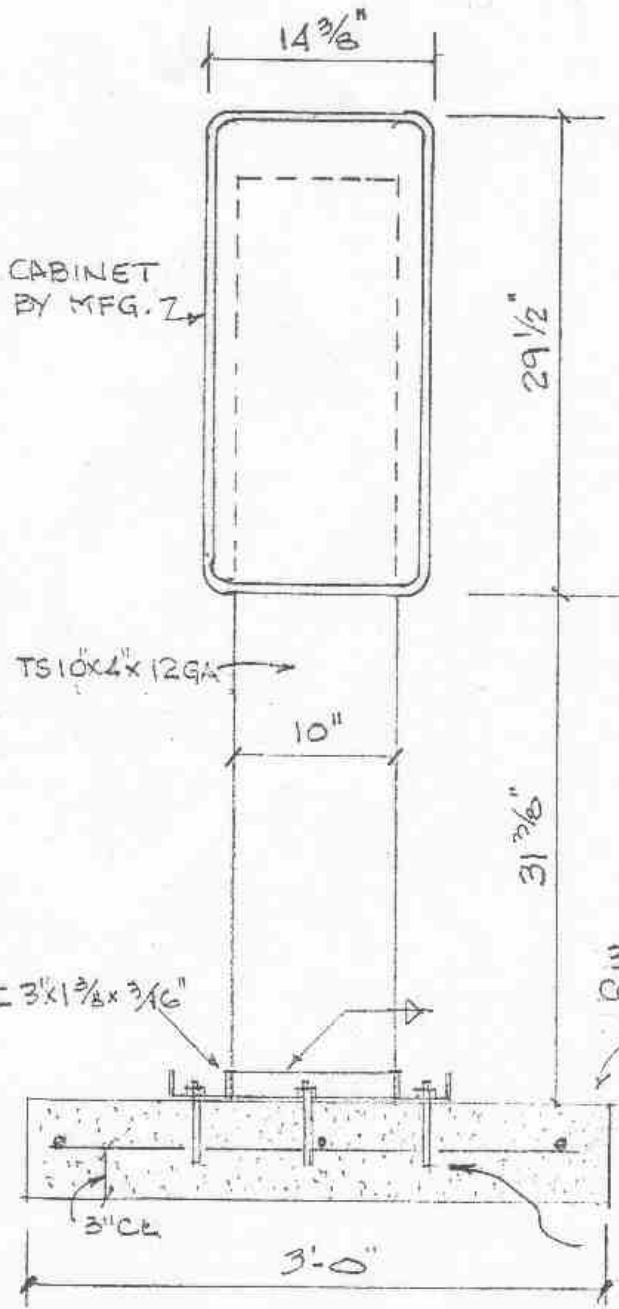
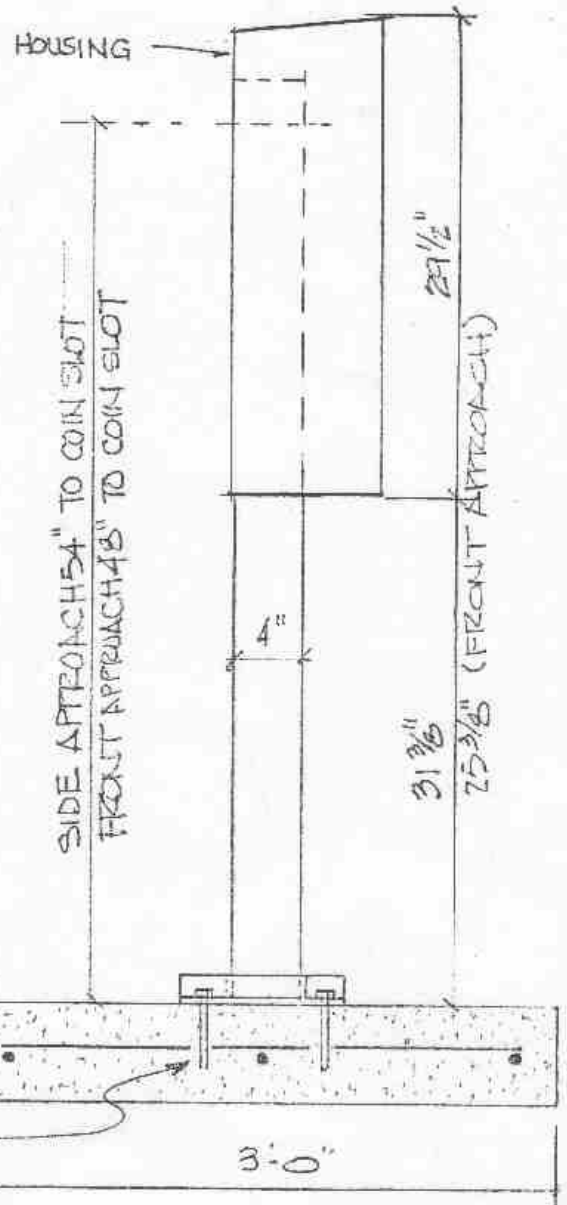


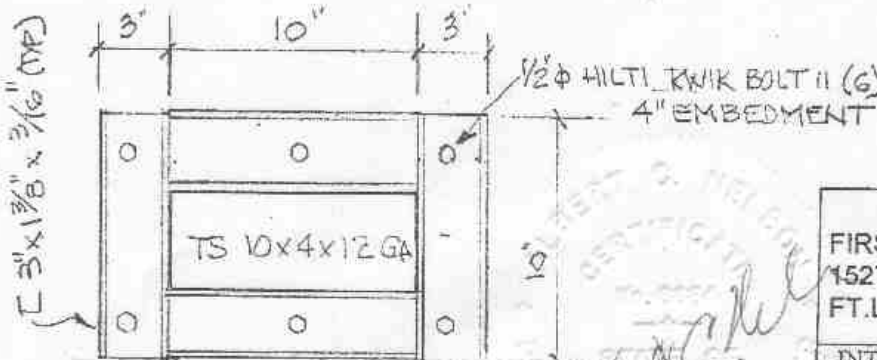
# TELEPHONE BOOTH PEDESTAL ANCHOR AND FOOTING



**FRONT/REAR ELEVATION**



**SIDE ELEVATION**



**BASE PLAN VIEW**

WIND PRESSURE = 33.0 PSF

FIRST AMERICAN TELECOMMUNICATIONS CORP.  
1527 N.E. 4TH AVENUE  
FT. LAUDERDALE, FLA 33304

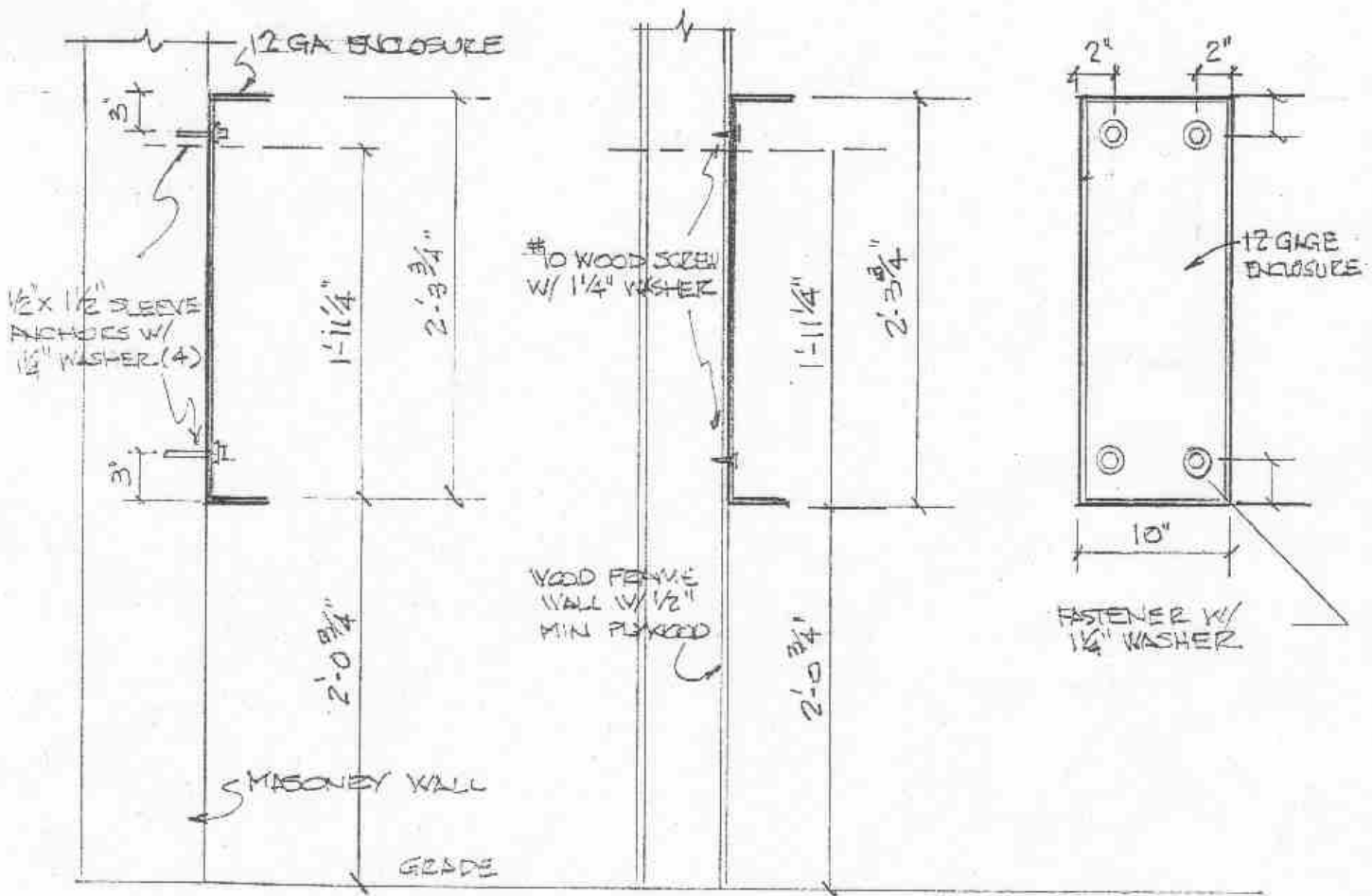
INTERNATIONAL ENGINEERING ASSOCIATES, INC.

Consulting Engineers  
Royal Palm Plaza 315 S.E. Miller Blvd. Suite 200 Boca Raton, Florida 33432  
561-391-5499 Fax 561-361-8381

Drawn: DCN	Date: 1/15/02	Job Number: 21109	Sheet: 1
Checked: DCN	Scale: 3/4" = 1'-0"	Revised:	of 3

ALBERT C. NELSON FLA PE #664

# WALL MOUNTED TELEPHONE



**SECTION AT  
MASONRY WALL**

**SECTION AT  
WOOD FRAME WALL**

**FRONT VIEW  
(WITHOUT PHONE SHOWN)**

WIND PRESSURE = -52.23 PSF  
+ 39.00 PSF

*Albert G. ...*  
*International Engineering Associates, Inc.*

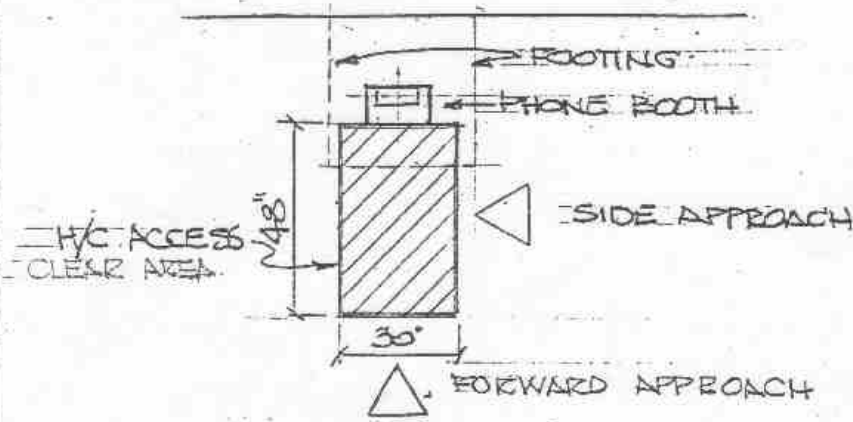
FIRST AMERICAN TELECOMMUNICATIONS CORP  
1527 N.E. 4TH AVENUE  
FT. LAUDERDALE, FLA 33304

INTERNATIONAL ENGINEERING ASSOCIATES, INC.

Consulting Engineers  
Royal Palm Plaza, 315 S.E. Mimner Blvd, Suite 200 Boca Raton, Florida 33432  
561-381-9499 Fax 561-381-9381

Drawn	KCN	Date	1/15/02	File Number	21109	Sheet	2
Checked	ACN	Scale	3/4" = 1'-0"	Project			013

# TELEPHONE BOOTH PEDESTAL ANCHOR AND FOOTING



## LOCATION PLAN

1/4" = 1'-0"

## SPECIFICATIONS

1. DESIGN MEETS THE WIND LOAD REQUIREMENT OF THE 2001 EDITION OF THE FLORIDA BUILDING CODE (ASCE 7-98) WITH WIND SPEED OF 145 MPH, EXPOSURE "C".
2. DESIGN MEETS ACCESSIBILITY REQUIREMENTS OF THE CURRENT EDITION OF THE FLORIDA ACCESSIBILITY CODE AND THE 2001 EDITION OF THE FLORIDA BUILDING CODE.
3. CONCRETE FOR FOOTINGS TO HAVE A 28 DAY COMPRESSIVE STRENGTH OF  $f_c = 2500$  PSI
4. ALL REINFORCING STEEL TO MEET ASTM A615 GRADE 60
5. COLD FORMED STEEL TO MEET ASTM A-500 WITH  $F_y = 46,000$  PSI
6. MILD STEEL TO MEET THE REQUIREMENTS OF ASTM A-36 WITH  $F_y = 36,000$  PSI
7. ANCHOR BOLTS TO BE 1/2" DIAMETER HILTI QUICK BOLTS 6" LONG WITH MINIMUM OF 4" EMBEDMENT
8. HOUSING MATERIAL TO BE 12 GAGE MINIMUM
9. PROVIDE BRUSHED ALUMINUM BASE COVER
10. MOUNTING BASE CHANNELS TO BE WELDED TO PEDESTAL AND SHIMMED WHERE LEVELING IS REQUIRED.
11. HOUSING TO BE SCREWED TO PEDESTAL WITH 4- #10 SCREWS

*Albert G. Nelson*  
*Ray C. Hester*  
*1/15/02*

FIRST AMERICAN TELECOMMUNICATIONS CORP  
 1527 N.E. 4TH AVENUE  
 FT. LAUDERDALE, FLA 33304

INTERNATIONAL ENGINEERING ASSOCIATES, INC.  
 Consulting Engineers  
 Royal Palm Plaza, 315 S.E. Nimmer Blvd. Suite 200 Boca Raton, Florida 33432  
 561-321-8499 Fax 561-361-9381

Drawn: DCN	Date: 1/15/02	Job Number: 21109	Sheet: 3
Checked: DCN	Date: 5/26/02	Project:	OF 3